

Birmingham SEND Local Area Partnership

Work Together Be Bold Be Better

Co-produce!



Co-Production Framework & Charter - summary



BIRMINGHAM
CHILDREN'S TRUST



Introduction

This Framework is intended to provide clarity about what co-production is, and how it can and should work to improve Special Educational Needs and Disability (SEND) support and services for children young people, and families.

Co-production is now accepted as key to developing effective public services. It is about children, young people, parents and carers being treated equally and playing a more powerful role in the public services they receive.

The Social Care Institute for Excellence (SCiE) states that it is linked with better outcomes for people who use services and their carers, and that it can help build stronger communities and can develop citizenship ([SCiE 22 Co-production guide](#)).

In Birmingham co-production will mean improving organisational cultures, structures, practices and processes in the SEND Partnership in order that co-production is embedded and effective.



Understanding and Defining Co-production

Co-production should be considered as moving on beyond involvement, participation and engagement with SEND children and young people, parents and carers, towards something that is about people who use SEND services being treated equally and having a more powerful role in the services they receive, so that their experience of these services is more meaningful and more in tune with what they need.

The Local Area Definition

There is no single agreed definition of co-production in the public services system, either in the UK or internationally. Birmingham SEND Local Area Partnership has consulted widely with parents and carers to build a local definition that works for them. From this process, the following definition has emerged:

“For us, co-production is about placing equal value on the contributions of children, young people, parents, carers and professionals in making decisions and improving the services received and the experiences and outcomes of those living with SEND in Birmingham.

Co-production therefore requires involving people in an open and inclusive manner right from the very start of their experiences with public services, as a means of building and maintaining trust, so that they can contribute fully to the commissioning, design, delivery and evaluation of services and outcomes.”

Guiding principles: What matters most to people?

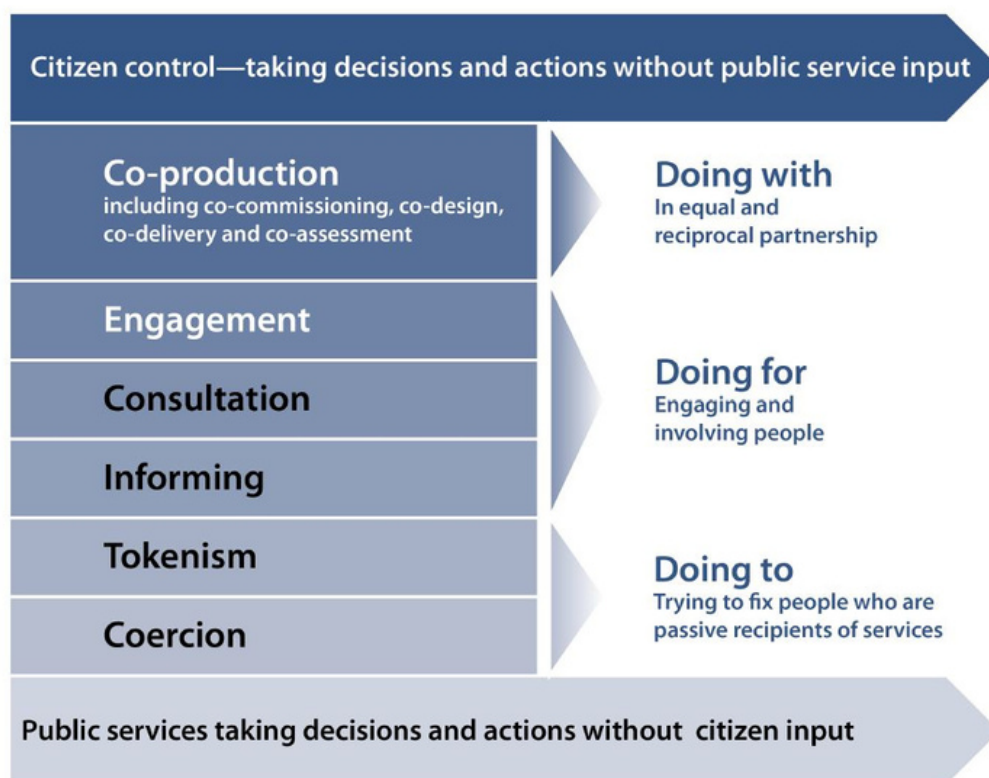
Trusted and able to trust
Listened to and heard
Treated with transparency and openness
Fully communicated with
Involved
Empowered
Equal
Accountable and able to hold to account

Guiding principles of
SEND co-production

Understanding levels of engagement: The Ladder of Participation

The SEND Code of Practice 2015 makes it clear that children, young people, parents and carers should be involved in the planning delivery and review of SEND services and that this can and should happen in different ways – at different times.

However, different levels of participation can be used to plan, deliver and review SEND services, as shown in the diagram below. It is important that the most appropriate method of engagement on the Ladder of Participation is agreed with children, young people, parents and carers. Not all circumstances will lend themselves to co-production, but wherever possible it should be considered the default option.



Birmingham SEND Co-production charter

This charter is a formal agreement between the members of the Birmingham SEND Local Area Partnership on behalf of the SEND network of, children, young people, parents and carers, to uphold, implement and review co-production as a way of working, as described in the Co-production Framework.

The SEND Local Area Partnership is a group of public service organisations, including Birmingham Parent Carer Forum and RISE Youth Forum, which support children and young people with SEND and their parent carers.

In signing this charter, the organisations listed below are committing to working together to ensure that the principles of effective co-production underpin the shaping and improvement of support and interventions which affect the long-term outcomes of children and young people with special educational needs and disability (SEND).

Charter pledges by Birmingham SEND Local Area Partnership

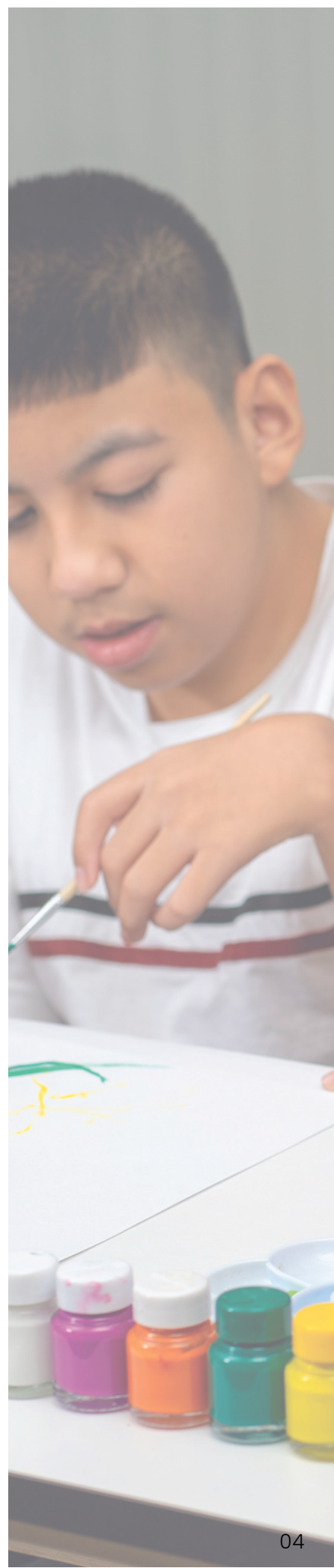


BIRMINGHAM
CHILDREN'S TRUST



The Birmingham SEND Local Area Partnership, consisting of the Governing Bodies of the following organisations:

- Birmingham City Council
- Birmingham Children's Trust
- Birmingham and Solihull Clinical Commissioning Group
- Birmingham Parent Carer Forum
- RISE Youth Forum



Charter pledges by Birmingham SEND Local Area Partnership

They pledge to:

- Respect all of the principles in this framework and charter, both in its policies and through the actions of all staff.
- Ensure co-production is a part of everyday practice for SEND services.
- Ensure early in contacts with children, young people, parents and carers that they are aware of the Co-production Framework and are invited to sign this Charter.
- Listen to families and their networks and routinely collect evidence about their lived experience and how well the Co-production Framework is being delivered.
- Ensure that reviews, audits and evaluations of co-production working within the SEND system of services and support are carried out co-productively with parents, carers and young people and that their findings are used to make continual improvements and refinements to co-productive working.
- Place all findings and outcomes arising from all reviews on the SEND Local Offer in an open and transparent way.
- Hold a review of the Co-production Framework after six months, and thereafter at least annually, to ensure that co-production is happening, is making a difference for children, young people and families and is following the principles in this Framework.
- Where concerns are raised that the principles of the Framework have been disregarded, the Partnership will hold itself to account and will play its part in seeking to put this right quickly.
- Together with SEND families, continuously improve SEND services and publicise best practice.
- Over summer 2022, agree simple and clear procedures for the how to escalate and resolve any issues arising.

Additional charter pledges by Birmingham Parent Carer Forum



The Birmingham Parent Carer Forum pledges that it will:

- Represent parent carers in Birmingham at all strategic SEND and Additional Needs forums within the city.
- Gather the views of local families to provide an insight into the lived experience of children, young people and families across the city and working across the partnership to facilitate improvements. As an equal partner in this arrangement, it will provide effective support and challenge to services.
- Provide the recognised communication route with all parent carers in Birmingham; raising collective parent carer views, sharing information and collating the feedback which comes from all parent carers and their support groups in the city.
- Where concerns are raised that the principles in the Co-production Framework have been disregarded by either parent carers or by others in the partnership, Birmingham Parent Carer Forum will play its part in seeking to put this right quickly.
- Jointly with the partnership, ensure wide and diverse participation of parents and carers and consider how best to increase participation of children and young people, so they also have an equal voice in the services designed to support them.
- Publicise examples of co-production successes to demonstrate how this way of working can bring better results for all parties (e.g. through case studies), so as to keep the Framework alive and in the Partnership's gaze.

Charter pledges by parents and carers in Birmingham, and their support groups, when working with the SEND services and support system

Parents and carers who work with Birmingham SEND services and support system pledge to:

- Respect the principles set out in this Co-production Framework, namely to recognise the right of all people in the system to be:
 - Trusted and able to trust
 - Listened to and heard
 - Treated with transparency and openness
 - Fully communicated with
 - Involved
 - Empowered
 - Treated equally
 - Accountable and able to hold to account
- Where it is suggested that these principles have been disregarded by parent carers or by others in the partnership, play their part in seeking to put this right quickly.
- Help to publicise examples of co-production successes in which they have been involved to demonstrate how this way of working can bring better results for all parties.

Charter pledges by children and young people in Birmingham, and their support groups, when working with the SEND services and support system

Children and Young People who engage with Birmingham SEND services and support system pledge to:

- Respect the principles set out in this Co-production Framework, namely to recognise the right of all people in the system to be:
 - o Trusted and able to trust
 - o Listened to and heard
 - o Treated with transparency and openness
 - o Fully communicated with
 - o Involved
 - o Empowered
 - o Treated equally
 - o Accountable and able to hold to account
- Where it is suggested that these principles have been disregarded by children, young people or by others in the partnership, play their part in seeking to put this right quickly.
- Help to publicise examples of co-production successes in which they have been involved to demonstrate how this way of working can bring better results for all parties.

Additional Signatories

In addition to SEND Local Area Partnership, all other public or private organizations in Birmingham will be invited over Summer 2022 to sign up to the principles in this Framework – this will include all Birmingham Schools, GP and Community Health centres, Leisure Centres, etc. Once they have signed, they will be listed in Appendix 1.

Appendix - Signatories to the Co-Production Charter

1. Local Area SEND Partnership Members

Birmingham City Council

Name TBC

Electronic Signature

Date

Birmingham Children's Trust

Name TBC

Electronic Signature

Date

Birmingham Parent Carer Forum

Name TBC

Electronic Signature

Date

Birmingham and Solihull Clinical Commissioning Group

Name TBC

Electronic Signature

Date

The RISE Youth Forum

Name TBC

Electronic Signature

Date

+ To add....

2. List of Wider Signatories (to be updated every 3 months)

Organisation	Representative	Date Signed