

Aston & Nechells

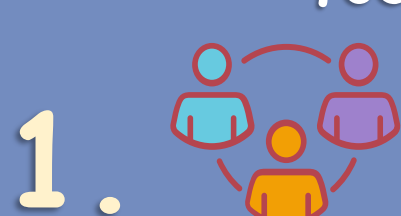
Developing Local SEND

Provision Project



This project involves 18 primary schools working together to support our SEND pupils more effectively.

Over the first year of the project we have focused on four Key Performance Indicators (KPIs).



1. Attendance



4. Classroom Learning

2.



Phonics

3.



Early Years

4.



Classroom Learning



A decrease of

↓ 40%

of pupils with SEN hyperactivity levels

An increase of

↑ 50%

with actions intending to help or benefit other people



Learning is on the up

A decrease of

↓ 40%

with peer-on-peer problems

3.



Early Years

An increase of

↑ 20%

achieved combined expectations with personal, social and emotional development

An increase of

↑ 10%

Shift in language and communication expectations since September



Learning is on the up

An increase of

↑ 21%

achieved combined expectations with Literacy

2.

Phonics

2x as many pupils passed since September with SEN support

17x as many pupils passed since September with an EHCP



Learning is on the up



1. Attendance

3% ↑ increase in attendance for children with SEN Support

100+

school staff have been upskilled this year!



More resources

have been put into schools